

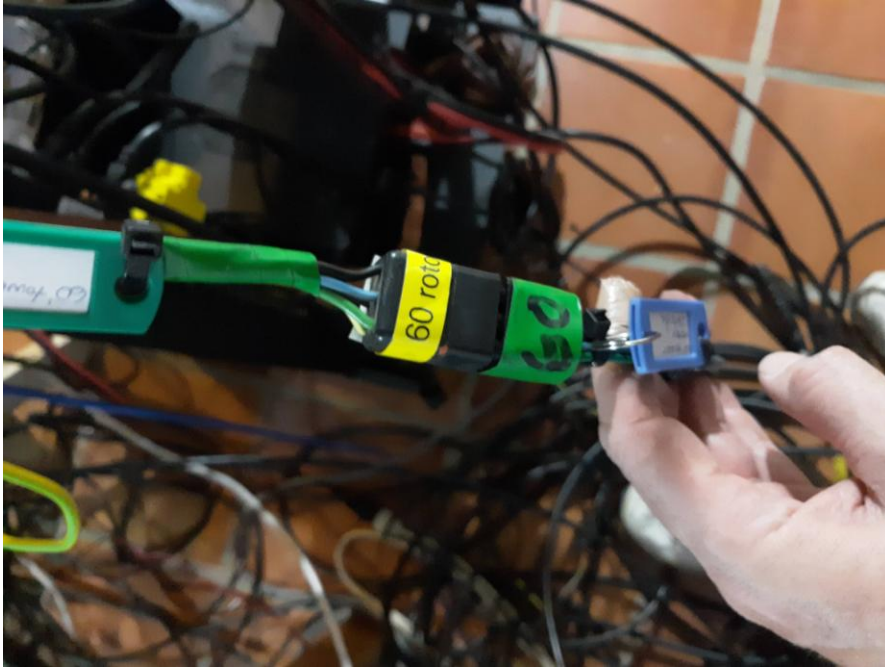
Disconnecting and Connecting BeLoud Remote Station

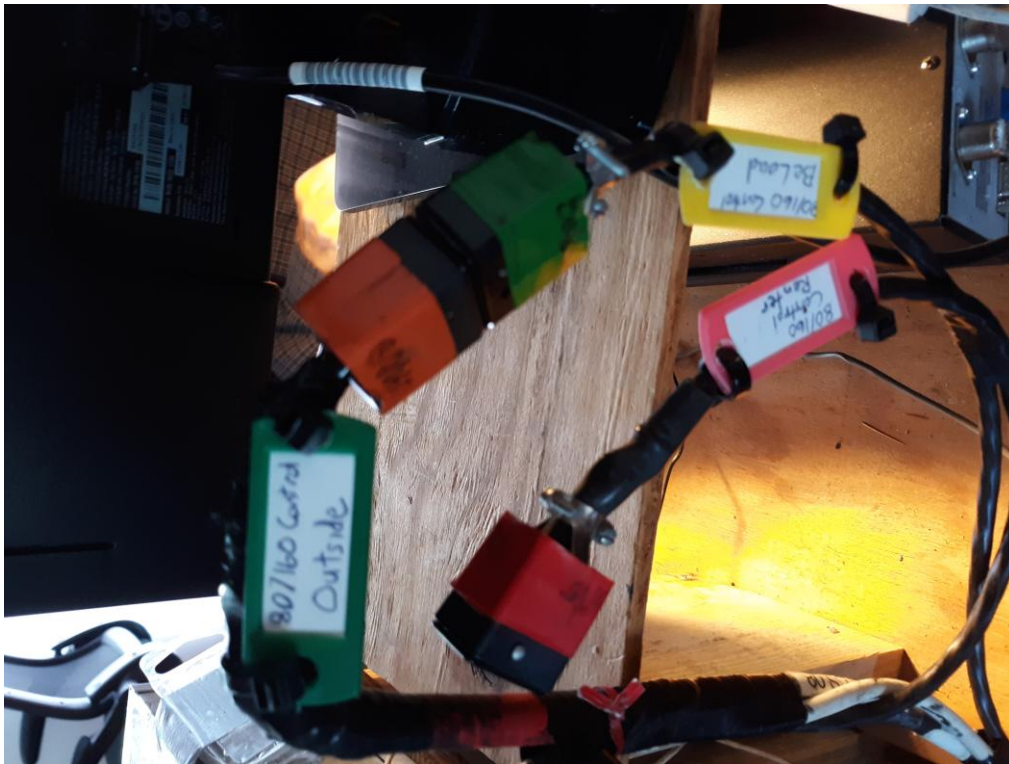
Disconnecting the BeLoud Remote Station Antennas and Rotators

- 1) Turn off the power to the **Icom 7300** and **Elecraft KPA1500** on the remote rack so no one can access the remote station.
- 2) Go to the back of the remote station rack. You will see the **Ameritron RCS-10** antenna switch at the bottom left of the rack. The following antennas are connected to this – 80 meter array, 40 meter beam, MomoBeam Tr-15 Tribander, WARC antenna and 6 Meter beam. These antennas should be disconnected and then connected to the **3x11 antenna switching box**. See the documentation [Triplexer and 3 x 11 Antenna Switch – How to Guide](#) on how to connect these antennas to the 3x11 antenna switch box. See the documentation [160/80 Meter Antenna Switch – How to Guide](#) for the instructions to hookup the 80 meter array.



- 3) On the right side of the remote rack facing the operating table you will see two Jones plugs. One is marked **60 Rotor** and the other **90 Rotor**. Unplug these and plug the end that goes to the rotators into the Jones plugs that come out of the two rotor boxes on the operating table. After you do this the remote station will be disconnected.





Re-connecting the BeLoud Remote Station Antennas and Rotators

- 1) Unplug the Jones plugs for the 60 foot and 90 foot towers from the back of each antenna rotator box and plug them back into the remote station.
- 2) **Unplug the 80 meter, 40 meter beam, Tr-15 tribander, WARC antenna and 6 meter beam from the 3x11 antenna switch and re-plug them in the position they were in on the Ameritron RCS-10.**
- 3) Turn on the IC7300 and KPA1500. On the day you are leaving call Steve Narducci, W9SN at 931-445-4923 so he can test to make sure everything is working. If you can't reach him call Fred Dennin, WW4LL at 803-566-7388. **Important: Don't transmit on any other antenna that's not connected to the remote station when he is testing the remote.**